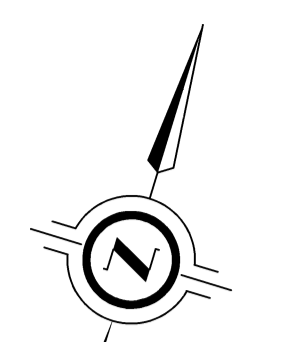


ADDITIONAL INFORMATION AS REQUIRED UNDER SECTION 51 (17) OF THE PLANNING ACT

- A) AS SHOWN ON DRAFT PLAN
- B) AS SHOWN ON PLAN
- C) AS SHOWN ON DRAFT AND KEY PLANS
- D) AS SHOWN IN LAND USE SCHEDULE
- E) AS SHOWN ON DRAFT AND KEY PLANS
- F) AS SHOWN ON DRAFT PLAN
- G) AS SHOWN ON DRAFT AND KEY PLANS
- H) MUNICIPAL WATER SUPPLY
- I) SOIL SANDY LOAM
- J) AS SHOWN ON DRAFT PLAN
- K) FULL MUNICIPAL SERVICES
- L) NONE



DRAFT PLAN OF SUBDIVISION OF PART OF BLOCK A AND B REGISTERED PLAN 784E CITY OF TORONTO

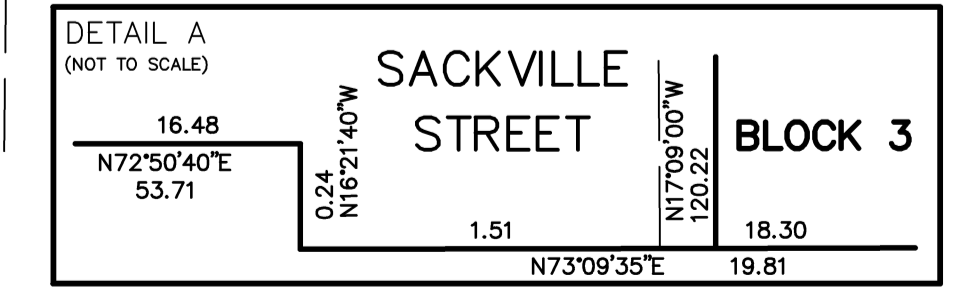
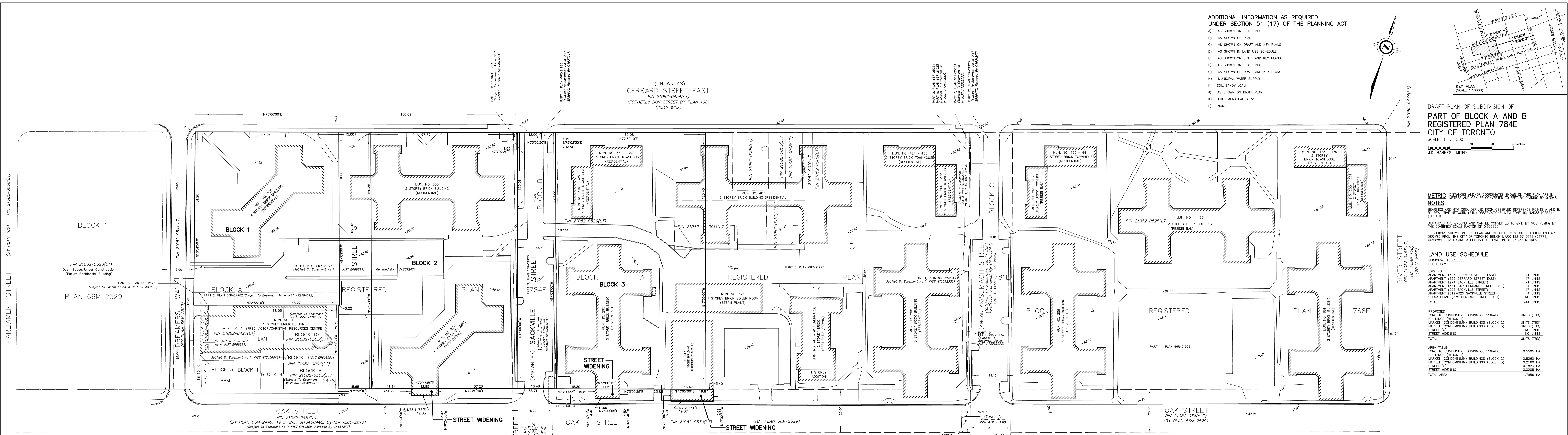
SCALE 1 : 500
 J.D. BARNES LIMITED

METRIC DISTANCES AND/OR COORDINATES SHOWN ON THIS PLAN ARE IN METRES AND CAN BE CONVERTED TO FEET BY DIVIDING BY 0.3048.

NOTES
 BEARINGS ARE MTM GRID, DERIVED FROM OBSERVED REFERENCE POINTS A AND B, BY REAL TIME NETWORK (RTN) OBSERVATIONS, MTM ZONE 10, NAD83 (CSRS) (2010).
 DISTANCES ARE GROUND AND CAN BE CONVERTED TO GRID BY MULTIPLYING BY THE COMBINED SCALE FACTOR OF 0.999895.
 ELEVATIONS SHOWN ON THIS PLAN ARE RELATED TO GEODETIC DATUM AND ARE DERIVED FROM THE CITY OF TORONTO BENCH MARK 12219740778 (CT178) CVD028:PRE78 HAVING A PUBLISHED ELEVATION OF 93.257 METRES.

LAND USE SCHEDULE

EXISTING MUNICIPAL ADDRESSES	SEE BELOW	UNITS
APARTMENT (325 GERRARD STREET EAST)		71 UNITS
APARTMENT (355 GERRARD STREET EAST)		47 UNITS
APARTMENT (274 SACKVILLE STREET)		71 UNITS
APARTMENT (361-367 GERRARD STREET EAST)		4 UNITS
APARTMENT (295 SACKVILLE STREET)		47 UNITS
APARTMENT (319-325 SACKVILLE STREET)		4 UNITS
STEAM PLANT (375 GERRARD STREET EAST)		NO UNITS
TOTAL		244 UNITS
PROPOSED TORONTO COMMUNITY HOUSING CORPORATION BUILDINGS (BLOCK 1)		UNITS (TBD)
MARKET (CONDOMINIUM) BUILDINGS (BLOCK 2)		UNITS (TBD)
MARKET (CONDOMINIUM) BUILDINGS (BLOCK 3)		UNITS (TBD)
STREET "G"		NO UNITS
STREET WIDENING		NO UNITS
TOTAL		UNITS (TBD)
AREA TABLE TORONTO COMMUNITY HOUSING CORPORATION BUILDINGS (BLOCK 1)		0.5505 HA
MARKET (CONDOMINIUM) BUILDINGS (BLOCK 2)		0.8260 HA
MARKET (CONDOMINIUM) BUILDINGS (BLOCK 3)		0.2150 HA
STREET "G"		0.1823 HA
STREET WIDENING		0.0208 HA
TOTAL AREA		1.7956 HA



I, **TORONTO COMMUNITY HOUSING CORPORATION** BEING THE REGISTERED OWNER OF THE SUBJECT LAND HEREBY AUTHORIZE J.D. BARNES LIMITED, TO PREPARE AND SUBMIT A DRAFT PLAN OF SUBDIVISION FOR APPROVAL.
 DATE: _____

SURVEYOR'S CERTIFICATE

I HEREBY CERTIFY THAT THE BOUNDARIES OF THE LANDS TO BE SUBDIVIDED AS SHOWN ON THIS PLAN AND THEIR RELATIONSHIP TO THE ADJACENT LANDS ARE CORRECTLY AND ACCURATELY SHOWN.

THIS DRAFT PLAN OF SUBDIVISION IS APPROVED UNDER SECTION 51 OF THE PLANNING ACT THIS _____ DAY OF _____ SUBJECT TO THE CONDITIONS, SET FORTH IN LETTER DATED _____

KELLY SKETH
 ACTING CHIEF DEVELOPMENT OFFICER
 I Have The Authority To Bind The Corporation

APRIL 10, 2023
 DATE

M.J. FISHER
 CHIEF PLANNER AND EXECUTIVE DIRECTOR,
 CITY PLANNING DIVISION, CITY OF TORONTO

DRAWN BY: J.L.
 CHECKED BY: M.J.F.
 PLOTTED: 4/10/2023

REFERENCE NO.: 21-15-128-01-PH1
 DATED: APRIL 10, 2023