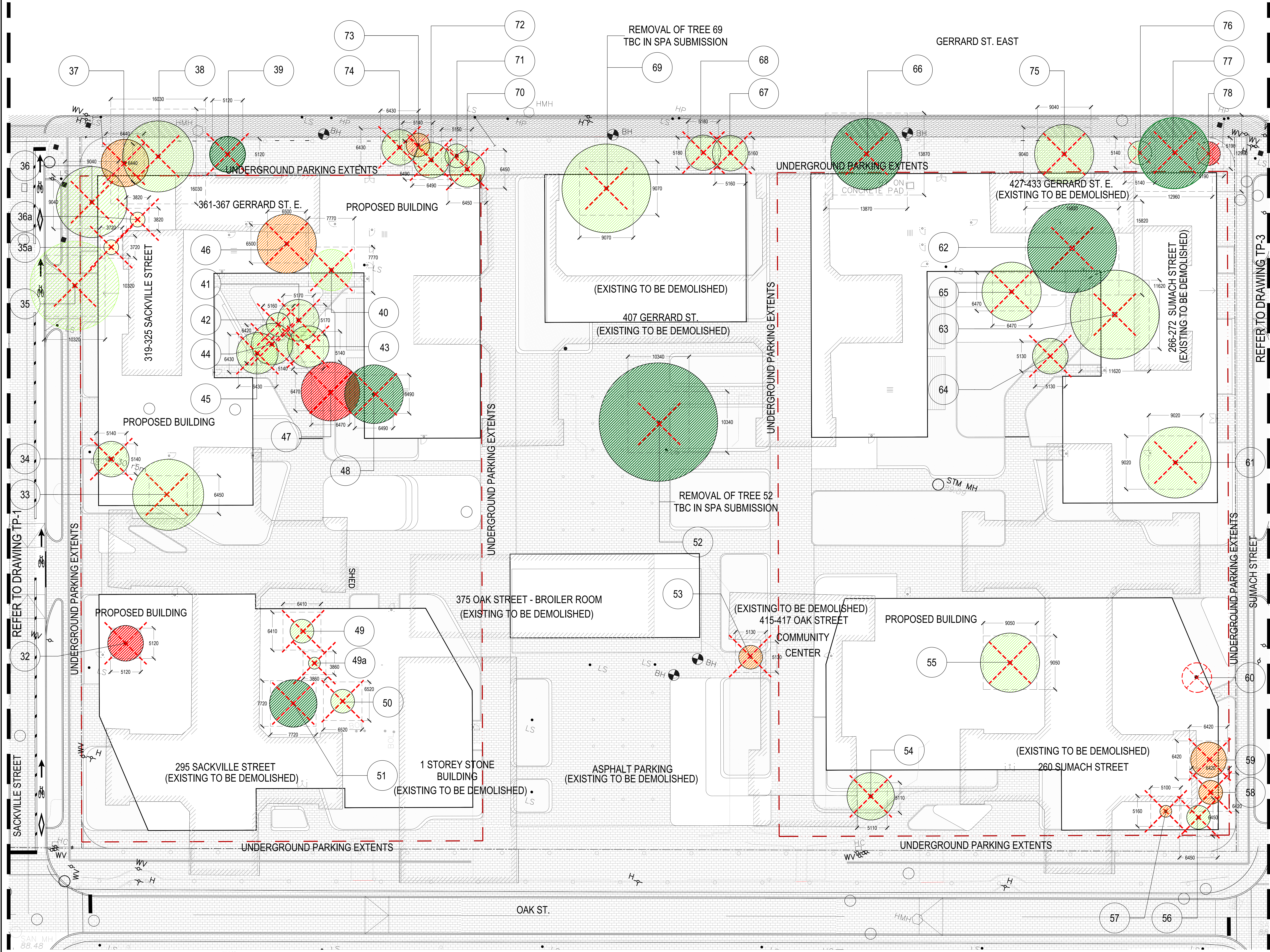


Tag #	Botanical Name	Common Name	Dbh (CM)	Crown Spread (Meter)	Height (Meter)	Condition	Remarks	TPZ size (Meter)	COT Rank
1	Pinus nigra	Austrian Pine	42	6	12	Fair	Limbed up, canopy at top 1/4 of trunk only, minor diplopia tip blight infestation of foliage.	3	1
2	Pinus nigra	Austrian Pine	45	6	12	Fair	Limbed up, canopy at top 1/4 of trunk only, canopy leaning North-west, minor diplopia tip blight infestation of foliage.	3	1
3	Pinus nigra	Austrian Pine	44	6	10	Fair	Limbed up, canopy at top 1/4 of trunk only, canopy leaning North-west, minor diplopia tip blight infestation of foliage. Double trunk at 50cm from base of tree, included bark between trunks, minor diplopia tip blight infestation of foliage.	3	1
4	Pinus nigra	Austrian Pine	47	8	10	Fair	Canopy health in good condition, mechanical root flare and surface root damage.	3.6	1
5	Acer platanoides	Norway Maple	55	10	8	Good	Canopy growth good, cavity decay observed at pruning wounds on trunk and lateral branches.	3	1
6	Pinus nigra	Austrian Pine	46	10	10	Good	1/4 of canopy had died, fungal decay observed on trunk wounds, surface root damage.	3.6	1
7	Acer platanoides	Norway Maple	55	12	12	Poor	Tree in good condition	3.6	1
8	Gleditsia triacanthos var. inermis	Honeylocust	53	12	12	Good	Limbed up, canopy at top 1/4 of trunk only, minor diplopia tip blight infestation of foliage.	3	1
9	Pinus nigra	Austrian Pine	50	10	12	Fair	Limbed up, canopy at top of trunk only, leader topped, minor diplopia tip blight infestation of foliage, growth stunted.	2.4	1
10	Pinus nigra	Austrian Pine	31	4	12	Poor	Tree leaning east over sidewalk and roadway, canopy at top 1/4 of trunk only, fall Hazard	2.4	1
11	Pinus nigra	Austrian Pine	38	5	8	Poor	Leader dead, significant canopy damage due to diplopia tip blight fungal infestation	3	1
12	Pinus nigra	Austrian Pine	42	6	8	Poor	Dead	0	
13	Pinus nigra	Austrian Pine	54	6	8	Fair	Limbed up, canopy at top 1/4 of trunk only, minor diplopia tip blight infestation of foliage.	3.6	1
14	Pinus nigra	Austrian Pine	54	6	8	Dead	Tree canopy extensively pruned in the past, squash vines growing over canopy from adjacent vegetable plantings, signage and metal affixed to trunk.	2.4	1
15	Pinus nigra	Austrian Pine	54	6	8	Dead	Tree canopy extensively pruned in the past, squash vines growing over canopy from adjacent vegetable plantings, leaning south.	1.8	0
16	Malus hybrid	Crabapple	32	5	6	Fair	Top of tree dead, severe diplopia tip blight, asphalt paving up to the base of trunk.	2.4	1
17	Malus hybrid	Crabapple	22	6	6	Fair	Canopy dieback, severe diplopia tip blight, asphalt paving up to the base of trunk.	3	1
18	Pinus nigra	Austrian Pine	30	6	6	Terminal Decline	Severe canopy dieback, cavity decay observed in pruning wounds in canopy.	3	1
19	Pinus nigra	Austrian Pine	41	6	6	Terminal Decline	Severe canopy dieback, severe leaf scorch, cavity decay observed in pruning wounds in canopy, surface root damage.	4.8	1
20	Acer platanoides	Norway Maple	45	10	10	Poor	Minor canopy dieback, double co-dominant leader at 2m from grade.	3	1
21	Acer platanoides	Norway Maple	74	12	15	Poor	Minor canopy dieback, double co-dominant leader at 1.5m from grade, included bark between leaders.	2.4	1
22	Gleditsia triacanthos var. inermis	Honeylocust	44	10	10	Fair	Canopy sparse, severe cavity decay, insect frass observed at base of trunk.	2.4	1
23	Gleditsia triacanthos var. inermis	Honeylocust	34	10	10	Fair	Canopy sparse, cavity decay	2.4	1
24	Malus hybrid	Crabapple	32	6	6	Poor	90% of canopy defoliated, base of trunk surrounded by concrete paving.	3	1
25	Malus hybrid	Crabapple	36	6	6	Poor	Tree canopy defoliated and in decline, tree pit paved over with asphalt.	1.8	0
26	Malus hybrid	Crabapple	43	8	8	Terminal Decline	Trunk hollow due to heartwood decay, canopy growth weak and crown significantly reduced by pruning, profuse suckering on trunk.	2.4	1
27	Malus hybrid	Crabapple	34	4	6	Poor	Minor diplopia tip blight damage in canopy, large callused wound on northwest side of trunk observed.	3	1
28	Pinus nigra	Austrian Pine	44	6	8	Fair			

Tag #	Botanical Name	Common Name	Dbh (CM)	Crown Spread (Meter)	Height (Meter)	Condition	Remarks	TPZ size (Meter)	COT Rank
29	Pinus nigra	Austrian Pine	47	8	8	Fair	Diplopia tip blight observed in canopy, profuse resin excretions observed on trunk, 2 co-dominant leaders originate at 2m from grade, included bark between co-dominant leaders.	3	1
30	Pinus nigra	Austrian Pine	45	8	8	Fair	Diplopia tip blight observed in canopy	3	1
31	Malus hybrid	Crabapple	38	6	6	Fair	Cavity decay and insect boreholes observed in trunk, canopy growth sparse.	2.4	1
32	Acer platanoides	Norway Maple	32	6	6	Terminal Decline	90% of canopy is defoliated, surface roots damaged.	2.4	1
33	Acer platanoides	Norway Maple	45	12	12	Fair	Surface root damage, leaf scorch, sparse foliage	3	1
34	Acer platanoides	Norway Maple	34	6	10	Fair	Surface root damage, leaf scorch, sparse foliage	2.4	1
35	Acer platanoides	Norway Maple	72	15	15	Fair	Surface root damage, leaf scorch, sparse foliage, frost cracks observed on trunk and lateral limbs, girdling roots.	4.8	1
35a	Picea glauca	White Spruce	12	2	3	Poor	Canopy lopsided due to severe pruning, growth vigor poor	1.8	0
35b	Picea glauca	White Spruce	22	3	4	Fair	Canopy form uneven and lower limbs removed due to poor pruning.	1.8	0
36	Acer saccharinum	Silver Maple	64	12	12	Fair	Severe leaf scorch, pruning wounds in upper canopy, girdling roots.	4.2	1
37	Acer saccharinum	Silver Maple	44	8	12	Poor	Canopy dieback, premature defoliation at top 50% of canopy, canopy health in good condition, 6 trunks originating at 1m from grade, included bark between trunks, cavity decay observed at junction of 2 trunks.	3	1
38	Tilia cordata	Little Leaf Linden	123	12	15	Fair		7.4	1
39	Picea glauca	White Spruce	32	6	10	Good		2.4	1
40	Pinus nigra	Austrian Pine	57	4	12	Fair	Diplopia tip blight, bark injury wound on south side of trunk	3.6	1
41	Pinus nigra	Austrian Pine	37	5	12	Fair	Diplopia tip blight damage in canopy	2.4	1
42	Pinus nigra	Austrian Pine	36	5	12	Fair	Diplopia tip blight damage in canopy	2.4	1
43	Pinus nigra	Austrian Pine	34	5	12	Fair	Diplopia tip blight damage in canopy	2.4	1
44	Pinus nigra	Austrian Pine	42	5	12	Fair	Diplopia tip blight damage in canopy, surface root damage	3	1
45	Pinus nigra	Austrian Pine	43	5	12	Fair	Diplopia tip blight damage in canopy, slight lean West	3	1
46	Alnus altissima	Tree of Heaven	50	8	15	Poor	Canopy health good, trunk girdled by chain link fence, severe heartwood decay observed within the girdling wound in the trunk.	3	1
47	Acer platanoides	Norway Maple	47	10	12	Terminal Decline	75% of canopy is dead, severe frost crack on south east side of trunk	3	1
48	Gleditsia triacanthos var. inermis	Honeylocust	49	10	12	Good	Canopy reduced on south side for vehicular traffic clearance	3	1
49	Pinus nigra	Austrian Pine	41	4	8	Fair	Minor diplopia tip blight damage in canopy.	3	1
49a	Pinus nigra	Austrian Pine	26	2	8	Fair	Canopy growth stunted due to shade from adjacent trees.	1.8	0
50	Pinus nigra	Austrian Pine	41	3	8	Fair	Canopy growth lopsided due to shade from adjacent trees.	3	1
51	Acer platanoides	Norway Maple	52	8	10	Good		3.6	1
52	Acer platanoides	Norway Maple	74	20	15	Good		4.8	1
53	Malus hybrid	Crabapple	33	4	10	Poor	Severe canopy dieback, cavity decay on trunk.	2.4	1
54	Abies concolor	White Fir	31	2	8	Fair	Table chained to base of tree, canopy vigor	2.4	1
55	Acer platanoides	Norway Maple	65	10	12	Fair	Canopy growth good, cavity decay observed at pruning wounds on trunk and lateral branches.	4.2	1
56	Pinus nigra	Austrian Pine	45	4	6	Fair	Minor diplopia tip blight damage in canopy	4.2	1
57	Pinus nigra	Austrian Pine	30	2	7	Poor	Diplopia tip blight damage in canopy, tree leaning east, canopy at top 1/4 of trunk only.	2.4	1
58	Pinus nigra	Austrian Pine	42	4	7	Poor	Diplopia tip blight damage in canopy, tree leaning east, canopy sparse	3	1
59	Pinus nigra	Austrian Pine	42	6	4	Poor	Diplopia tip blight damage in canopy, tree topped at 4m from grade, top horizontal lateral branches assumed dominance.	3	1

Tag #	Botanical Name	Common Name	Dbh (CM)	Crown Spread (Meter)	Height (Meter)	Condition	Remarks	TPZ size (Meter)	COT Rank
60	Pinus nigra	Austrian Pine				Dead		0	
61	Acer platanoides	Norway Maple	62	12	12	Fair	Canopy health good, decay at base of tree with insect frass, pruning wounds in canopy observed.	4.2	1
62	Acer saccharinum	Silver Maple	122	15	15	Good	2 codominant trunks at 1m from grade, leaf scorch	7.3	1
63	Acer saccharinum	Silver Maple	82	15	15	Fair	3 codominant trunks at 1m from grade, canopy leaning east, canker but at base of trunk.	5.4	1
64	Pinus nigra	Austrian Pine	33	6	7	Fair	Diplopia tip blight in canopy, leaning south.	2.4	1
65	Pinus nigra	Austrian Pine	47	8	8	Fair	2 codominant trunks at 1m from grade, diplopia tip blight in canopy	3	1
66	Tilia cordata	Little Leaf Linden	107	12	12	Good	3 codominant trunks at 1.5m from grade, included bark observed between trunk junctions.	6.4	1
67	Pinus nigra	Austrian Pine	36	6	12	Fair	Diplopia tip blight, canopy growth on east side of trunk only	2.4	1
68	Pinus nigra	Austrian Pine	38	6	10	Fair	Diplopia tip blight in canopy	2.4	1
69	Acer platanoides	Norway Maple	67	15	15	Fair	Surface roots damaged, minor branch dieback in canopy, leaf scorch	4.2	1
70	Pinus nigra	Austrian Pine	45	5	10	Fair	Diplopia tip blight in canopy, 2 codominant leaders in canopy	3	1
71	Pinus nigra	Austrian Pine	35	4	10	Fair	Diplopia tip blight in canopy, canopy on north side of trunk only, 3 codominant leaders	2.4	1
72	Pinus nigra	Austrian Pine	49	6	10	Fair	Diplopia tip blight in canopy, insect bore holes observed on trunk	3	1
73	Pinus nigra	Austrian Pine	34	4	8	Poor	Canopy growth stunted due to shade from adjacent trees.	2.4	1
74	Pinus nigra	Austrian Pine	43	6	8	Fair	Diplopia tip blight, 2 codominant trunks originating from trunk at 2m from grade.	3	1
75	Acer platanoides	Norway Maple	64	10	12	Fair	Leaf scorch, branch tip dieback	4.2	1
76	Acer platanoides	Norway Maple	34	10	10	Fair	Lower limbs removed, leaf scorch, surface roots damaged	2.4	1
77	Tilia cordata	Little Leaf Linden	96	12	15	Good	3 co-dominant leaders in canopy	6	1
78	Acer platanoides	Norway Maple	39	6	10	Terminal Decline	1/2 of canopy on north side removed by pruning, remaining canopy in decline.	2.4	1
79	Acer saccharinum	Silver Maple	118	15	15	Fair	Branch tip dieback, leaf scorch, surface roots damaged	7	1
80	Taxus cuspidata	Japanese Yew	28, 26, 30	6	6	Fair	3 trunk clump shrub pruned to tree form, bark damaged observed on trunk.	1.8	0
81	Tilia cordata	Little Leaf Linden	78	12	15	Good	Surface root damage	4.8	1
82	Gleditsia triacanthos var. inermis	Honeylocust	57	10	12	Fair	Minor branch dieback	3.6	1
83	Acer platanoides	Norway Maple	53	10	12	Fair	Minor branch tip dieback, leaf scorch, girdling roots	3.6	1
84	Pinus nigra	Austrian Pine	34	4	10	Fair	Diplopia tip blight, canopy on west side of trunk only	2.4	1
85	Pinus nigra	Austrian Pine	32	6	10	Fair	Diplopia tip blight, 2 codominant leaders at 2m from grade, canopy at top 1/4 of trunk only, slight lean south.	2.4	1
86	Pinus nigra	Austrian Pine	30	4	10	Fair	Diplopia tip blight, canopy leaning south, canopy at top 1/4 of trunk	2.4	1
87	Pinus nigra	Austrian Pine	29	4	10	Fair	Diplopia tip blight, canopy at top 1/4 of trunk	1.8	0
88	Pinus nigra	Austrian Pine	32	4	10	Fair	Diplopia tip blight, top of leader twisted.	2.4	1
89	Pinus nigra	Austrian Pine	46	6	10	Fair	Diplopia tip blight, 3 co-dominant horizontal lateral limbs forming canopy.	3	1
90	Acer saccharinum	Silver Maple	80	10	12	Fair	2 trunk at 1m from grade, base of trunk girdled by chain link fence	4.8	1
91	Acer saccharinum	Silver Maple	58	12	12	Terminal Decline/ Fall Hazard	Canopy in good condition, wet wood decay observed in scar from previously removed co-dominant trunks on north and south side of tree, fall Hazard	3.6	1
92	Acer saccharinum	Silver Maple	110	12	15	Good	4 codominant trunks arise from main trunk at 50cm from grade	6.6	1
93	Quercus rubra	Red Oak	66	10	15	Fair	Significant leaf scorch, minor tip branch dieback, dead lateral limbs observed in canopy.	4.2	1

Tag #	Botanical Name	Common Name	Dbh (CM)	Crown Spread (Meter)	Height (Meter)	Condition	Remarks	TPZ size (Meter)	COT Rank
94	Acer platanoides	Norway Maple	86	12	15	Good	Canopy in good condition, wound on north side of trunk, insect frass observed in the wound, bark around wound healing with good callus growth.	5.4	1
95	Pinus nigra	Austrian Pine	46	6	10	Fair	Diplopia tip blight to canopy, insect bore holes observed on trunk, canopy on south and east side of trunk only.	3	1
96	Pinus nigra	Austrian Pine	45	6	10	Fair	Diplopia tip blight to canopy, insect bore holes observed on trunk	3	1
97	Pinus nigra	Austrian Pine	48	6	10	Terminal Decline	Diplopia tip blight, 3 codominant leaders in canopy, south and east oriented leaders dead.	3	1
98	Gleditsia triacanthos var. inermis	Honeylocust				Dead		0	
99	Acer platanoides	Norway Maple	45	6	10	Good		3	1
100	Acer platanoides	Norway Maple				Dead		0	
101	Gleditsia triacanthos var. inermis	Honeylocust	40	6	10	Good		2.4	1
102	Gleditsia triacanthos var. inermis	Honeylocust	35	6	10	Good		2.4	1
103	Gleditsia triacanthos var. inermis	Honeylocust	39	6	10	Fair	Root flare damage at junction with laneway paving, minor canopy dieback.	2.4	1
104	Gleditsia triacanthos var. inermis	Honeylocust	41	6	10	Good		3	1
105	Gleditsia triacanthos var. inermis	Honeylocust	40	6	10	Good		2.4	1
106	Quercus rubra	Red Oak	40	6	6	Terminal Decline	75% of canopy is dead, base of tree used for large metal garbage bin storage.	2.4	1
107	Pinus nigra	Austrian Pine				Dead		0	
108	Pinus nigra	Austrian Pine	40	6	6	Terminal Decline	75% of canopy is dead, base of tree used for large metal garbage bin storage.	2.4	1
109	Pinus nigra	Austrian Pine				Dead		0	
110	Pinus nigra	Austrian Pine	43	8	8	Fair	Diplopia tip blight in canopy, slight lean east	3	1
111	Pinus nigra	Austrian Pine	34	4	8	Fair	Diplopia tip blight in canopy, 2 codominant leaders in canopy, bark injury on trunk due to rubbing branches.	2.4	1
112	Alnus altissima	Tree of Heaven	63	6	10	Terminal Decline	Cavity decay, vertical bark fissure on north side of trunk, large vertical wound on south side of trunk. Fall Hazard	4.2	1
113	Gleditsia triacanthos var. inermis	Honeylocust	37	6	8	Good		2.4	1
114	Gleditsia triacanthos var. inermis	Honeylocust	44	6	8	Good			



REFER TO DRAWING TP-1

SACKVILLE STREET

REFER TO DRAWING TP-3

SUMACH STREET

COPYRIGHT RESERVED

This plan and design are, and at all times remain the exclusive property of PFS Studio and cannot be used or reproduced without written consent. Contractors shall verify and be responsible for all dimensions and conditions on the job. This office shall be informed of any discrepancies from the dimensions and conditions shown on the drawing.

ISSUANCE	No.	Date	Details	By
	1	APR 1, 2022	ISSUED FOR ZBA - CLIENT REVIEW	
	2	APR 14, 2022	ISSUED FOR ZBA	
	3	JUNE 13, 2022	ISSUED FOR ZBA - REVISION	
	4	NOV 16, 2022	ZBA REVISION - CLIENT REVIEW	
	5	NOV 29, 2022	ZBA REVISION	

TP1.02
 PRIVATE TREES OVER 30CM DBH TO BE REMOVED (CITY CODE 1)
 #32, 33, 34, 35, 36, 37, 39, 40, 41, 42, 43, 44, 45, 46, 47, 48, 51, 52, 53, 54, 55, 56, 57, 58,
 59, 61, 62, 63, 64, 65, 67, 68, 69, 70, 71, 72, 73, 74, 75, 76, 77, 78 = 41 TREES
 DEAD TREES TO BE REMOVED (CITY CODE 0)
 #60 = 1 TREE
 TREES BELOW 30CM DBH TO BE REMOVED (CITY CODE 0)
 #35a, 35b, = 2 TREES
 NOTE:
 REMOVAL OF TREE 52 AND 69 TO BE CONFIRMED IN SPA SUBMISSION.

LEGEND

	TREE TAG #		GOOD CONDITION		POOR CONDITION		DEAD		UNDERGROUND PARKING EXTENTS
	EXISTING TREE		FAIR CONDITION		TERMINAL DECLINE		TREE PROTECTION ZONE MINIMUM LIMIT		TREE TO BE REMOVED
									TREE PROTECTION FENCE
									EXTENT OF MINIMUM TREE PROTECTION FENCING AREA

PROJECT NORTH
 TRUE NORTH
 NORTH ARROW

PFS STUDIO
 PLANNING • URBAN DESIGN • LANDSCAPE ARCHITECTURE

1777 Hwy 7 East
 Unit 101, Richmond Hill, ON L4B 1V7
 905.882.8888
 www.pfsstudio.com

STAMP:

PROJECT NAME:
**REGENT PARK
 PHASES 4 & 5**

DRAWING TITLE:
TREE PROTECTION PLAN

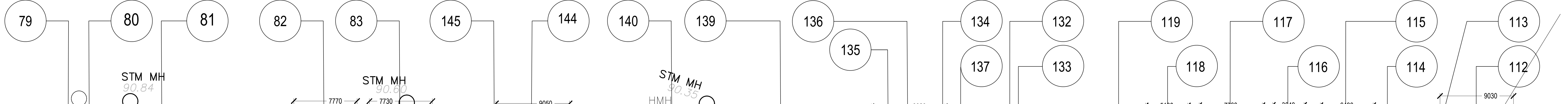
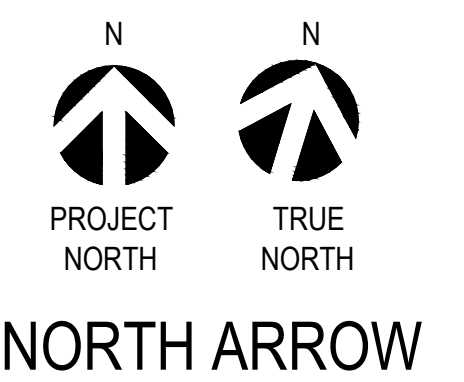
PFS PROJECT NUMBER: 21035 DATE: 04/14/2022

DRAWN BY: SL CHECKED BY: JN

SCALE:
 1:200

DWG. NO.: **TP 1.02** OF: XX

GERRARD ST. EAST

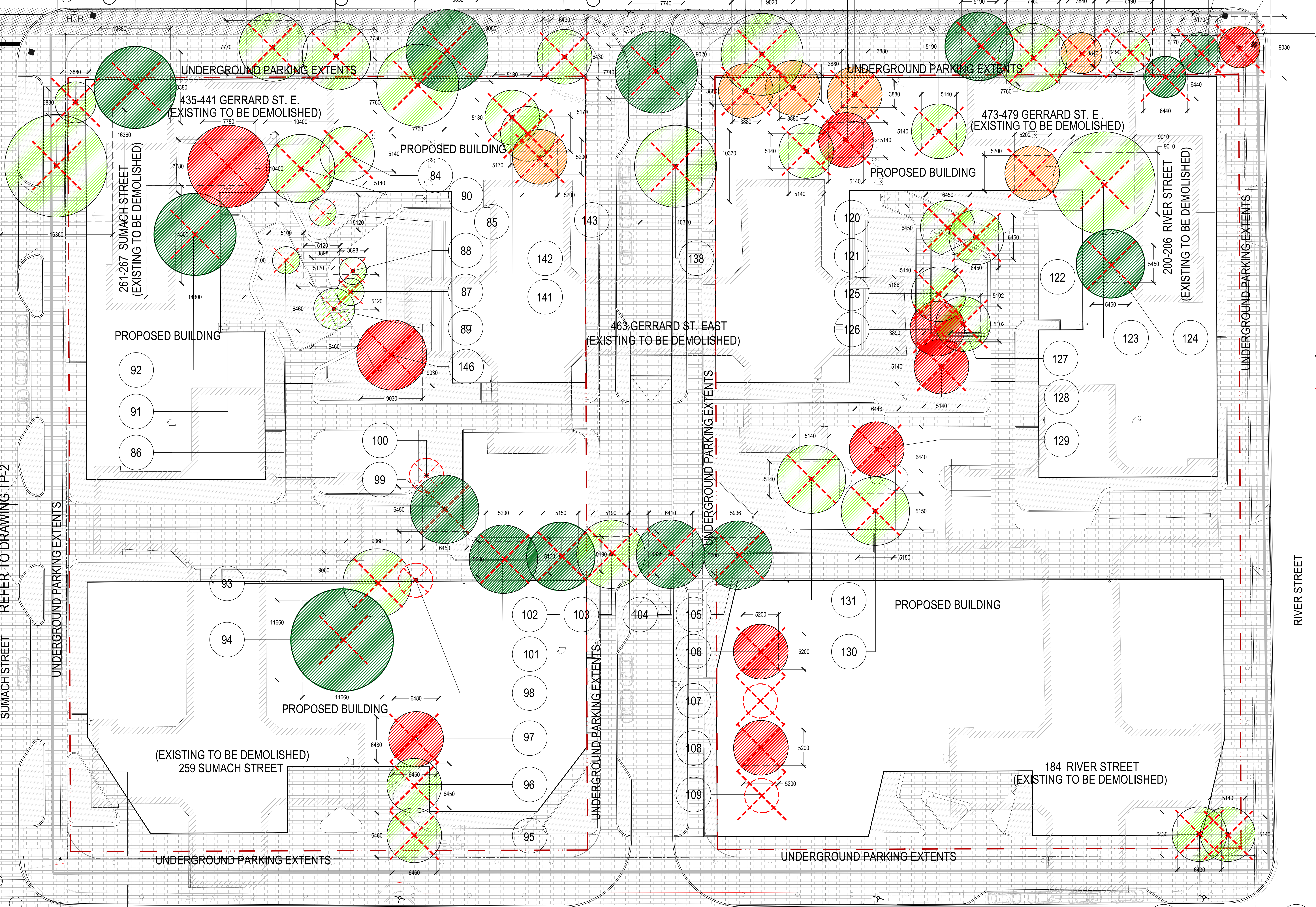


LEGEND

- XX TREE TAG #
- EXISTING TREE
- GOOD CONDITION
- FAIR CONDITION
- POOR CONDITION
- TERMINAL DECLINE
- DEAD TREE TO BE REMOVED
- LIMIT OF UNDERGROUND PARKING STRUCTURE
- TREE PROTECTION FENCE
- CONSTRUCTION HOARDING
- UNDERGROUND PARKING EXTENTS
- EXTENT OF MINIMUM TREE PROTECTION FENCING AREA
- TREE TO BE REMOVED

COPYRIGHT RESERVED.
This plan and design are, and at all times remain the exclusive property of PFS Studio and cannot be used or reproduced without written consent. Contractors shall verify and be responsible for all dimensions and conditions on the job. This office shall be informed of any discrepancies from the dimensions and conditions shown on the drawing.

ISSUANCE	No.	Date	Details	By
1	APR 1, 2022	RESOLVED FOR ZBA - CLIENT REVIEW		
2	APR 14, 2022	RESOLVED FOR ZBA		
3	JUNE 10, 2022	RESOLVED FOR PERMITS AND INSPECTION		
4	NOV 16, 2022	ZBA RE-EXAMINATION - CLIENT REVIEW		
5	NOV 29, 2022	ZBA RE-EXAMINATION		



TP1.03
PRIVATE TREES OVER 30CM DBH TO BE REMOVED (CITY CODE 1)
79, 80, 81, 82, 83, 84, 85, 86, 87, 88, 89, 90, 91, 92, 93, 94, 95, 96, 97, 98, 101, 102, 103, 104, 105, 106, 108, 110, 111, 112, 113, 114, 115, 116, 117, 118, 119, 120, 121, 122, 123, 124, 125, 126, 127, 128, 129, 130, 131, 132, 133, 134, 135, 136, 137, 138, 141, 142, 143, 139, 140, 141, 142, 144, 145, 146 = 66 TREES

DEAD TREES TO BE REMOVED (CITY CODE 0)
98, 100, 107, 109 = 4 TREES

TREES BELOW 30CM DBH TO BE REMOVED (CITY CODE 0)
126, 133, 134 = 2 TREES

NON-PERMIT SIZED TREES (BELOW 30CM DBH) TO BE PRESERVED
24 = 1 TREE

REFER TO DRAWING TP-2

SEE DETAIL A



PROJECT NAME:
REGENT PARK PHASES 4 & 5

DRAWING TITLE:
TREE PROTECTION PLAN

PFS PROJECT NUMBER: 21035 DATE: 04/14/2022

DRAWN BY: SL CHECKED BY: JN

SCALE: 1:200

DWG. NO.: TP 1.03 OF: XX

AREA	#of Cells	Soil Cell Volumn (m3)	Soil Depth (mm)	Total Soil Volume (m3)	Total Soil Area (m2)	Type	#of Trees	Trench	Volume Per Tree (m3)
1.01	N/A	N/A	1000	180	180	LARGE STATURE	6	SHARED	30
1.02	N/A	N/A	1000	211	211	LARGE STATURE	7	SHARED	30
1.03	N/A	N/A	1400	63	45	LARGE STATURE	2	SHARED	32
1.04	N/A	N/A	1400	153	109	LARGE STATURE	5	SHARED	31
1.05	N/A	N/A	1450	126	87	LARGE STATURE	4	SHARED	31
1.06	N/A	N/A	1000	135	135	LARGE STATURE	4	SHARED	34
1.07	N/A	N/A	1200	346	288	LARGE STATURE	10	SHARED	35
1.08	N/A	N/A	1200	171	205	LARGE STATURE	6	SHARED	34
1.09	N/A	N/A	1450	67	46	LARGE STATURE	2	N/A	34
1.10	N/A	N/A	1000	623	623	LARGE STATURE	3	SHARED	208
1.11	N/A	N/A	1450	102	70	LARGE STATURE	3	SHARED	34
1.12	N/A	N/A	1450	54	37	LARGE STATURE	1	N/A	54
1.13	N/A	N/A	1450	457	315	LARGE STATURE	12	SHARED	38
1.14	N/A	N/A	1000	53	53	LARGE STATURE	1	N/A	53
1.15	N/A	N/A	1450	479	330	LARGE STATURE	16	SHARED	30
1.16	N/A	N/A	1450	36	36	LARGE STATURE	1	NA	36
1.17	N/A	N/A	1450	71	49	LARGE STATURE	3	SHARED	36
1.18	N/A	N/A	1000	72	72	LARGE STATURE	1	N/A	72
1.19	N/A	N/A	1000	45	45	LARGE STATURE	1	N/A	45
1.20	N/A	N/A	1450	100	69	LARGE STATURE	3	SHARED	33
1.21	N/A	N/A	1450	120	83	LARGE STATURE	1	N/A	30
1.22	N/A	N/A	1450	96	66	LARGE STATURE	3	SHARED	32
1.23	N/A	N/A	1450	151	104	LARGE STATURE	4	SHARED	30
1.24	N/A	N/A	1000	47	47	LARGE STATURE	1	N/A	47
1.25	N/A	N/A	1450	264	182	LARGE STATURE	7	SHARED	38
1.26	N/A	N/A	1000	171	171	LARGE STATURE	4	SHARED	43
1.27	N/A	N/A	1200	32	27	LARGE STATURE	1	N/A	32
1.28	N/A	N/A	1450	254	175	LARGE STATURE	7	SHARED	36
1.29	N/A	N/A	1450	73	50	LARGE STATURE	2	SHARED	36
1.30	N/A	N/A	1000	129	129	LARGE STATURE	4	N/A	32
1.31	N/A	N/A	1450	157	108	LARGE STATURE	3	SHARED	31
1.32	N/A	N/A	1000	178	178	LARGE STATURE	6	SHARED	30
1.33	N/A	N/A	1000	365	365	LARGE STATURE	11	SHARED	33
1.34	N/A	N/A	1450	60	41	LARGE STATURE	2	SHARED	30
1.35	N/A	N/A	1450	155	107	LARGE STATURE	4	SHARED	39
1.36	N/A	N/A	1450	155	107	LARGE STATURE	5	SHARED	31

AREA	#of Cells	Soil Cell Volumn (m3)	Soil Depth (mm)	Total Soil Volume (m3)	Total Soil Area (m2)	Type	#of Trees	Trench	Volume Per Tree (m3)
2.01	N/A	N/A	1000	180	180	LARGE STATURE	6	SHARED	30
2.02	N/A	N/A	1000	120	120	LARGE STATURE	4	SHARED	30
2.03	N/A	N/A	1000	211	211	LARGE STATURE	7	SHARED	30
2.04	N/A	N/A	1000	31	31	LARGE STATURE	1	N/A	31
2.05	N/A	N/A	1450	60	41	LARGE STATURE	2	SHARED	30
2.06	N/A	N/A	1450	210	145	LARGE STATURE	7	SHARED	30
2.07	N/A	N/A	1450	90	62	LARGE STATURE	3	SHARED	30
2.09	N/A	N/A	1000	115	115	LARGE STATURE	3	SHARED	38
2.10	N/A	N/A	1000	69	69	LARGE STATURE	2	SHARED	35
2.11	N/A	N/A	1450	265	184	LARGE STATURE	11	SHARED	33
2.12	N/A	N/A	1450	62	43	LARGE STATURE	2	SHARED	31
2.13	N/A	N/A	1450	133	92	LARGE STATURE	4	SHARED	33
2.14	N/A	N/A	1450	184	127	LARGE STATURE	5	SHARED	37
2.16	N/A	N/A	1000	126	126	LARGE STATURE	3	N/A	42
2.17	N/A	N/A	1450	307	212	LARGE STATURE	10	SHARED	31
2.18	N/A	N/A	1000	846	846	LARGE STATURE	26	SHARED	33
2.19	N/A	N/A	1450	35	35	LARGE STATURE	1	N/A	35
2.20	N/A	N/A	1000	763	763	LARGE STATURE	24	SHARED	32
2.22	N/A	N/A	1450	241	241	LARGE STATURE	4	SHARED	60
2.23	N/A	N/A	1000	90	90	LARGE STATURE	3	SHARED	30
2.24	N/A	N/A	1000	87	87	LARGE STATURE	2	SHARED	44
2.25	N/A	N/A	1000	32	32	LARGE STATURE	2	SHARED	32
2.27	N/A	N/A	1000	99	99	LARGE STATURE	3	SHARED	33
2.28	N/A	N/A	1000	76	76	LARGE STATURE	2	SHARED	38
2.29	N/A	N/A	1000	116	116	LARGE STATURE	2	SHARED	58
2.30	N/A	N/A	1000	154	154	LARGE STATURE	2	SHARED	77
2.32	N/A	N/A	1000	128	128	LARGE STATURE	2	SHARED	64
2.33	N/A	N/A	1000	218	218	LARGE STATURE	6	SHARED	36
2.36	N/A	N/A	1450	187	128	LARGE STATURE	6	SHARED	31
2.37	N/A	N/A	1000	70	70	LARGE STATURE	1	SHARED	70
2.38	N/A	N/A	1450	178	123	LARGE STATURE	5	SHARED	36
2.39	N/A	N/A	1000	64	64	LARGE STATURE	2	SHARED	32
2.40	N/A	N/A	1450	365	252	LARGE STATURE	11	SHARED	33
2.41	N/A	N/A	1000	264	264	LARGE STATURE	3	SHARED	121
2.42	N/A	N/A	1000	162	162	LARGE STATURE	1	N/A	162
2.43	N/A	N/A	1000	296	296	LARGE STATURE	2	SHARED	148
2.44	N/A	N/A	1000	268	185	LARGE STATURE	7	SHARED	38
2.45	N/A	N/A	1450	93	64	LARGE STATURE	3	SHARED	31
2.46	N/A	N/A	1450	90	62	LARGE STATURE	3	SHARED	30
2.47	N/A	N/A	1000	225	225	LARGE STATURE	7	SHARED	32
2.48	N/A	N/A	1000	35	35	LARGE STATURE	2	N/A	35
2.49	N/A	N/A	1600	60	38	LARGE STATURE	2	SHARED	30

AREA	#of Cells	Soil Cell Volumn (m3)	Soil Depth (mm)	Total Soil Volume (m3)	Total Soil Area (m2)	Type	#of Trees	Trench	Volume Per Tree (m3)
3.01	N/A	N/A	1450	64	44	LARGE STATURE	2	SHARED	32
3.02	N/A	N/A	1450	131	91	LARGE STATURE	4	SHARED	33
3.03	N/A	N/A	1450	160	110	LARGE STATURE	5	SHARED	32
3.04	N/A	N/A	1000	60	60	LARGE STATURE	2	SHARED	30
3.05	N/A	N/A	1000	37	37	LARGE STATURE	1	SHARED	37
3.06	N/A	N/A	1450	36	25	LARGE STATURE	1	N/A	36
3.07	N/A	N/A	1600	96	60	LARGE STATURE	3	SHARED	32
3.08	N/A	N/A	1000	34	34	LARGE STATURE	1	N/A	34
3.09	N/A	N/A	1450	36	25	LARGE STATURE	1	N/A	36
3.10	N/A	N/A	1000	174	120	LARGE STATURE	5	SHARED	35
3.11	N/A	N/A	1600	62	39	LARGE STATURE	2	SHARED	31
3.12	N/A	N/A	1450	78	54	LARGE STATURE	7	SHARED	39
3.13	N/A	N/A	1450	286	197	LARGE STATURE	9	SHARED	32
3.14	N/A	N/A	1450	109	75	LARGE STATURE	3	SHARED	36
3.15	N/A	N/A	1000	121	121	LARGE STATURE	2	SHARED	61
3.16	N/A	N/A	1000	63	63	LARGE STATURE	2	SHARED	32
3.17	N/A	N/A	1000	337	337	LARGE STATURE	8	SHARED	42
3.18	N/A	N/A	1000	627	627	LARGE STATURE	16	SHARED	39
3.19	N/A	N/A	1450	115	79	LARGE STATURE	3	SHARED	38
3.20	N/A	N/A	1450	328	226	LARGE STATURE	11	SHARED	30
3.21	N/A	N/A	1450	32	22	LARGE STATURE	1	N/A	32
3.22	N/A	N/A	1450	30	21	LARGE STATURE	1	N/A	30
3.23	N/A	N/A	1450	74	51	LARGE STATURE	2	SHARED	37
3.24	N/A	N/A	1000	64	64	LARGE STATURE	2	SHARED	32
3.25	N/A	N/A	1450	151	104	LARGE STATURE	5	SHARED	30
3.26	N/A	N/A	1450	33	23	LARGE STATURE	1	N/A	33
3.27	N/A	N/A	1200	68	57	LARGE STATURE	2	SHARED	34
3.28	N/A	N/A	1450	102	102	LARGE STATURE	3	SHARED	34
3.29	N/A	N/A	1450	189	130	LARGE STATURE	6	SHARED	32
3.30	N/A	N/A	1450	68	47	LARGE STATURE	2	SHARED	34
3.31	N/A	N/A	1000	354	354	LARGE STATURE	11	SHARED	32
3.32	N/A	N/A	1000	216	216	LARGE STATURE	7	SHARED	31
3.33	N/A	N/A	1450	152	105	LARGE STATURE	5	SHARED	30
3.34	N/A	N/A	1450	119	82	LARGE STATURE	4	SHARED	30
3.35	N/A	N/A	1000	350	350	LARGE STATURE	11	SHARED	32
3.36	N/A	N/A	1450	40	40	LARGE STATURE	1	N/A	40
3.37	N/A	N/A	1450	126	87	LARGE STATURE	4	SHARED	32
3.38	N/A	N/A	1000	219	219	LARGE STATURE	7	SHARED	31
3.39	N/A	N/A	1000	133	133	LARGE STATURE	4	SHARED	33
3.40	N/A	N/A	1000	158	158	LARGE STATURE	1	SHARED	158
3.41	N/A	N/A	1000	70	229	LARGE STATURE	3	SHARED	23
3.42	N/A	N/A	1600	64	40	LARGE STATURE	2	SHARED	32
3.43	N/A	N/A	1000	64	64	LARGE STATURE	2	SHARED	32
3.44	N/A	N/A	1000	95	95	LARGE STATURE	3	SHARED	32
3.45	N/A	N/A	1000	90	90	LARGE STATURE	3	SHARED	30
3.46	N/A	N/A	1600	331	207	LARGE STATURE	11	SHARED	33
3.47	N/A	N/A	1000	150	150	LARGE STATURE	5	SHARED	30
3.48	N/A	N/A	1000	162	162	LARGE STATURE	5	SHARED	32

Copyright Reserved
This plan and design are, and at all times remain the exclusive property of PFS Studio and cannot be used or reproduced without written consent. Contractors shall verify and be responsible for all dimensions and conditions on the job. This office shall be informed of any discrepancies from the dimensions and conditions shown on the drawing.

No.	Date	Details	By
1	APR 1, 2022	ISSUED FOR ZBA - CLIENT REVIEW	-
2	APR 14, 2022	ISSUED FOR ZBA	-
3	JUNE 13, 2022	ISSUED FOR ZBA - REVISION	-
4	NOV 16, 2022	ZBA RESUBMISSION - CLIENT REVIEW	-
5	NOV 29, 2022	ZBA RESUBMISSION	-

- NOTES:
- STREET TREES:
 - STREET TREES ARE A MINIMUM SPACING OF 8M ON CENTRE
 - STREET TREES ARE A MINIMUM OF 1M CLEARANCE BETWEEN THE TREE AND PROPERTY LINE
 - STREET TREES HAVE A MINIMUM CLEARANCE BETWEEN THE TREE TRUNK AND ANY PORTION OF THE BUILDING, INCLUDING OVERHEAD CANOPIES/OUTLINES

- ALL TREES:
- PLEASE SELECT A MINIMUM 70 MM CALIPER (BALLED AND BURLAPPED) FOR ALL PROPOSED TREES

- WATERING PROGRAM:
- PERMANENT IRRIGATION SYSTEM TO BE PROVIDED FOR ALL PLANTING
 - PLANTS TO BE IRRIGATED BETWEEN THE MONTH OF APRIL TO OCTOBER
 - A WATERING PROGRAM FOR THE FIRST 2 YEARS WILL BE PROVIDED

- SOIL:
- A MINIMUM OF 30M3 OF SOIL VOLUME IS PROVIDED PER TREE
 - FOR SOIL TYPE PLEASE REFER TO COT STANDARD CONSTRUCTION SPECIFICATION FOR GROWING MEDIUM. ALL SOIL TO MATCH THE PARAMETERS AS SPECIFIED IN TS 5.10, JUNE 2021.



PROJECT NAME:
REGENT PARK PHASES 4 & 5

DRAWING TITLE:
SOIL VOLUME PLAN

PFS PROJECT NUMBER: 21035 DATE: 04/14/2022

DRAWN BY: SA CHECKED BY: VV

SCALE: NOT TO SCALE

DWG. NO.:

L2.04 OF: XX

